



**Livy Strong**  
Chair

**John Koier**  
Vice Chair

**Phyl Newbeck**  
Secretary

**Hilaire Thomas**  
Treasurer

**Sabina Ernst**

**Michael Lazorchak**



*Membership Matters!*

## Help Protect our future landscape... TODAY

**Please note:** All JULT memberships now run on a calendar year from January 1st to December 31st.

### Please sign me up for:

- |   |         |
|---|---------|
| <input type="checkbox"/> <b>Conservator</b> Membership    | \$500   |
| <input type="checkbox"/> <b>Steward</b> Membership        | \$100   |
| <input type="checkbox"/> <b>Sponsor</b> Membership        | \$50    |
| <input type="checkbox"/> <b>Family</b> Membership         | \$35    |
| <input type="checkbox"/> <b>Individual</b> Membership     | \$25    |
| <input type="checkbox"/> <b>Student/Senior</b> Membership | \$10    |
| <input type="checkbox"/> <b>Lifetime</b> Membership       | \$1,000 |

(Beat inflation and avoid renewal notices!)

### Other Considerations:

- ☐ My employer's matching gift is enclosed.
- ☐ Please **do not** send me a "Thank-you" gift.
- ☐ I wish to remain anonymous.

### Please contact me regarding:

- ☐ Conservation options for my land
- ☐ Making a gift of stock
- ☐ Other planned giving opportunities
- ☐ Volunteer opportunities:
  - \_\_\_ Fundraising/Events
  - \_\_\_ Office/Administration
  - \_\_\_ Trails/Land Stewardship

### Legacy Planning:

Please consider JULT gifts that might include a bequest or charitable income gift. Ask an attorney or estate planner about your options.

Name \_\_\_\_\_  
Address \_\_\_\_\_  
City/State/Zip \_\_\_\_\_  
Phone \_\_\_\_\_ E-Mail \_\_\_\_\_

Please make **checks** payable to **JULT** and mail to the address below. Or you may **pay by credit card** via our website: [www.jult.org](http://www.jult.org).  
All contributions are tax-deductible.

P.O. Box 80 • Jericho, VT 05465-0080 • 802-899-2693 • [julandtrust@gmail.com](mailto:julandtrust@gmail.com) • [www.jult.org](http://www.jult.org)  
[www.facebook.com/Jericho-Underhill-Land-Trust](http://www.facebook.com/Jericho-Underhill-Land-Trust)



# LAND TRUST NEWS

Preserving Open Lands In Our Towns

Spring Newsletter 2021



Mobbs Farm

Photo Credit: Chris Smith

## MOBBS FARM, LATEST UPDATE

The vote to conserve Mobbs Farm at Town Meeting was a resounding "YES". Thank you Jericho residents for your overwhelming support to conserve Mobbs with a 91% approval rating. But this is just the beginning. Our vote was advisory in nature to the Selectboard. It does not direct them to conserve but simply represents the desire of the majority of Jericho residents. The next step is for the Vermont Land Trust (VLT) and the Town of Jericho to enter into a Memorandum of Understanding (MOU). This document describes the broad outlines of an agreement to conserve Mobbs along with some mutually accepted expectations. While not legally binding, the MOU signals that a binding document is imminent. That document is called the Conservation Easement and it is at the heart of land conservation. VLT will be writing a draft form of the Conservation Easement. This will be presented to the Selectboard and Town council for review and feedback. The drafting process can take several months or longer.

The Conservation Easement will include the Purposes or reasons for conserving Mobbs Farm, the Restricted Uses that protect those purposes and also the Permitted Uses. The document may highlight important natural features such as riverbank areas, wetlands and vernal pools. The Conservation Easement requires that Mobbs Farm be open to the public for non-motorized, recreational and educational enjoyment. The Conservation Easement also requires the Town to develop a management plan for the Mobbs property with broad community engagement. The Mobbs Committee has accomplished this every five years. The management plan can be found on the Town website under Mobbs Committee.

*Continued on page 2...*



We're on the web: [www.jult.org](http://www.jult.org)

Remember to "Like" us on





## MOBBS FARM, LATEST UPDATE CONTINUED...

While the legal process can be lengthy, the Jericho Underhill Land Trust is delighted to report that the fundraising effort to conserve Mobbs Farm is finished! A total of \$43,000 was necessary with \$25,000 going into a stewardship endowment for VLT. This provides funds for VLT to monitor Mobbs Farm in perpetuity and to be available for any land stewardship questions. JULT is contributing \$10,000, VLT \$10,000 and Jericho's Conservation Reserve Fund another \$10,000. A very generous donation from the Kusserow Family Fund of \$13,000 completed our fundraising goal!

The Jericho Underhill Land Trust has been advocating for the conservation of Mobbs Farm for many years. It takes a true collaboration of the community to help make this happen. We are excited to see the progress and we look forward to a celebration once Mobbs Farm is permanently protected.

### PHOTO INVITATION!

Are you taking photos of the wild world around us? Want to share them with us? We would be delighted to post your photos on our Jericho\_Underhill\_Land\_Trust Instagram page. Just direct message (DM) them. Here is the QR code for our page.



### MEDIA MAVEN

JULT is pleased to introduce Diana Dunn, who is reshaping our media outreach. She is challenging our board members to expand beyond our routine forms of communication. In the near future, members can expect occasional emails for updating purposes and we now have an Instagram account. Anticipate QR codes to appear and our trail maps to be more user friendly. JULT will also be visiting the Farmers' Market at Mills Riverside Park in order to provide information and receive public feedback. We will have handout material at our events as well. With Diana's assistance, JULT will be able to engage with our community more effectively.



## JULT LAND STEWARDSHIP UPDATES

JULT currently owns, pays taxes and manages almost 800 acres of land in the towns of Jericho, Richmond and Bolton. We are kept very busy trying to keep up with the properties and their management requirements. Here are some of the recent management highlights.

Kikas Valley Farm has a new consulting forester and an updated Forestry Management Plan. We have retained Michael Brown of Birdseye Consulting. In conjunction with Audubon Vermont, he has incorporated some bird-friendly practices into our new forestry management plan and we are excited about this. Earlier last fall, Allaire Diamond of VLT helped a few volunteers set up an emerald ash borer monitoring site on the KVF uplands. We have ongoing invasive plant removal work dealing with infestations of Japanese barberry, buckthorn, honeysuckle and multiflora rose. We are still working on boundary marking on the recently acquired 70-acre addition to this property. Finally, we are getting some expert help with stream/erosion management practices in the riparian area surrounding the farm fields leased by Paul Mazza.

## You Are Invited!

### Our Annual JULT Meeting

**May 3, 2021, 7:00 p.m. to 8:30 p.m.**

Come join us at our Annual meeting as we celebrate another year of land conservation! Last year's in-person meeting was canceled due to the Covid pandemic but this year we are Zooming! From the safety and comfort of your own home, we will have a brief business meeting, followed by a fantastic presentation by Chittenden County's Forester, Ethan Tapper. He will be speaking about:

**Eastern Old Growth Forests: What They Are, Why They're Important, and Opportunities for Management.** Ethan will discuss what old growth forests are like (it may surprise you!), why they should be important to us, and what our role may be in helping develop new old growth on our landscape. In addition to allowing forests to grow and develop into old growth on their own, new research has highlighted opportunities to manage forests actively to become more like old growth forests sooner than they would naturally. Combined with an ecological forestry approach, this presents an opportunity to manage forests while increasing biodiversity, resiliency and overall health. Ethan will also discuss opportunities for employing this approach across Vermont's landscape. Please check our JULT website at [www.jult.org](http://www.jult.org) for the Zoom link for our meeting.

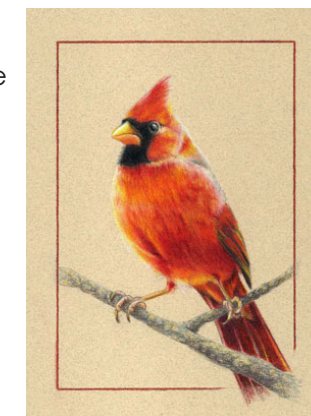
### Annual Bird Slideshow and Walk with Evergreen Erb and Friends

**May 6th at 6:30 p.m.** Slideshow Zoom presentation co-hosted with the Deborah Rawson Memorial Library. Please pre-register for this event with the Library at [www.drml.org/programs/calendar](http://www.drml.org/programs/calendar) or call 899-4962. They will provide the Zoom link. Your email address will be shared with JULT.

Preview our resident and newly arrived bird species with Evergreen's very popular slideshow. She pairs photos with the actual bird songs and calls to better familiarize us. Evergreen's storytelling about the birds is especially memorable.

**May 8th at 7:00 a.m.** Mills Riverside Park The Deborah Rawson Memorial Library is co-hosting this event. Please pre-register with the Library at [www.drml.org/programs/calendar](http://www.drml.org/programs/calendar) or call 899-4962. E-mail information will be shared with JULT.

Evergreen Erb has dedicated herself to leading our JULT bird walks at Mills Riverside Park for many, many years. Even though she now lives in Huntington, Evergreen wouldn't want to miss her yearly birding adventure at the park. We are very pleased to have her continue this tradition. This is a casual bird walk and suitable for all ages. We also welcome Sabina Ernst, JULT board member and conservation commission member, to help lead our walk so that group size can remain small. Please wear boots and masks and bring binoculars. We will meet before the covered bridge. Expect to see a lot of birds!



Artist: Diana D. Dunn

### Spring Wildflower Walk at the Park with Michele Tulis

**May 15th at 10:00 a.m.** Mills Riverside Park The Deborah Rawson Memorial Library is co-hosting this event. Please pre-register with the Library at [www.drml.org/programs/calendar](http://www.drml.org/programs/calendar) or call 899-4962. Group size will be limited to eight. E-mail information will be shared with JULT.

After a long, cold winter, spring brings us robust wildflowers that add new color to our landscape. How reassuring and welcoming it is to see this marvelous spring occurrence. Come join Michele Tulis as we walk the trails and explore the wide variety of early wildflowers growing at the park. Michele will help us identify them and also explain some of the medicinal uses for these wild plants. This is a casual walk that she has led for a number of years. The trails can be muddy so wear boots and we will be donning masks.

**Please contact JULT at [julandtrust@gmail.com](mailto:julandtrust@gmail.com) with any questions.**  
**Other event ideas that you may have...just let us know!**