



JERICH
UNDERHILL
LAND
TRUST

WOLFRUN NATURAL AREA

PRESERVE RULES

Day use only
Foot traffic only
No motorized vehicles, bicycles
or horses
Hunting and fishing allowed in
season
No trapping
Dogs on leash
Carry in and carry out

TRAIL DESCRIPTIONS

East Indies Trail - 0.5 miles
A gentle walk on an old logging
road past stone walls and young
forest.

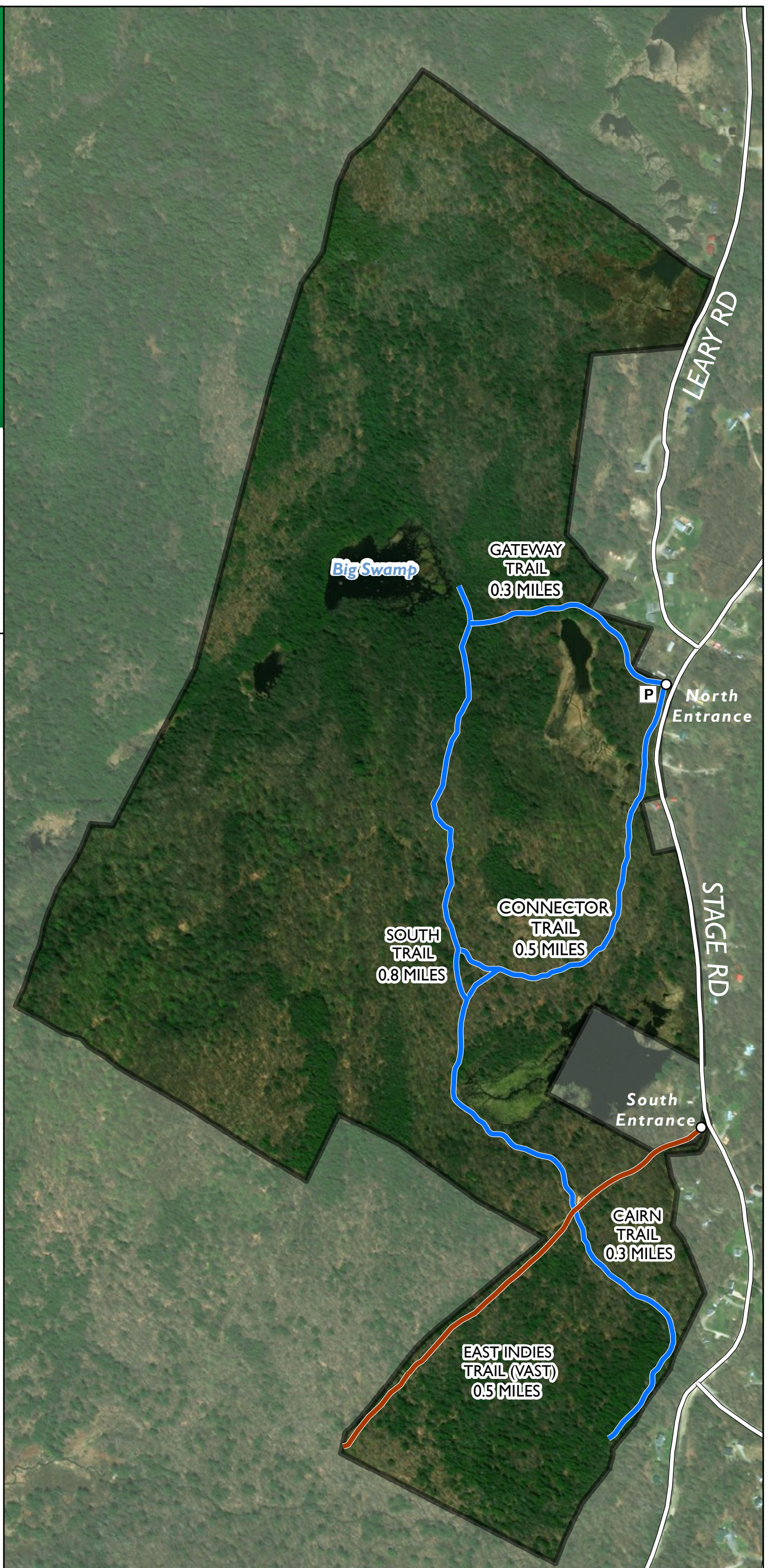
South Trail - 0.8 miles
A rugged walk past two wetlands
and steep, rocky outcrops.

Cairn Trail - 0.3 miles
A short spur trail providing access
to a series of rock cairns.

Gateway Trail - 0.2 miles
A north entrance trail to the
Wolfrun Property from Stage
Road.

Connector Trail - 0.5 miles
A steep, wet trail that descends
through forest to a pond and
parking.

JULT Contact Information:
899-2693 julandtrust@gmail.com



— Walking Trail
— VAST Trail

0 0.2 0.4 Miles

Map created by Hannah Phillips, 2018. Data Sources: roads, VT E911 Road Centerlines, VCGI; aerial imagery, VT 2014 NAIP aerial imagery, VCGI; trails, digitized in summer 2017.